

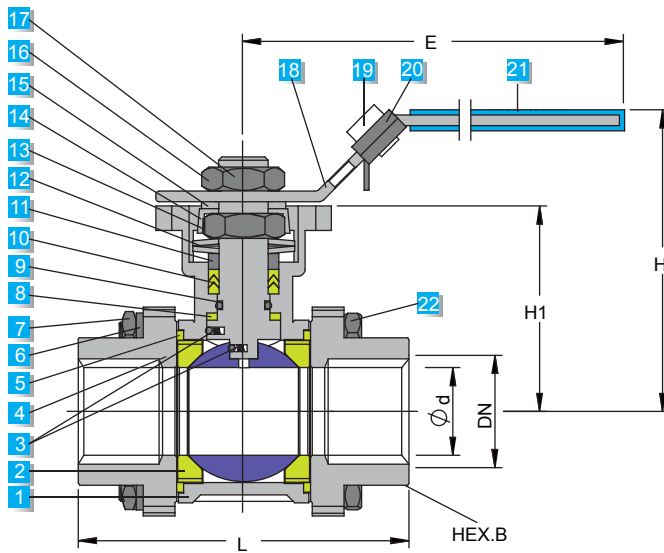
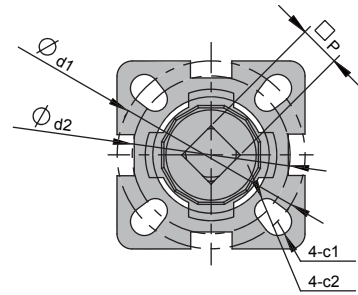
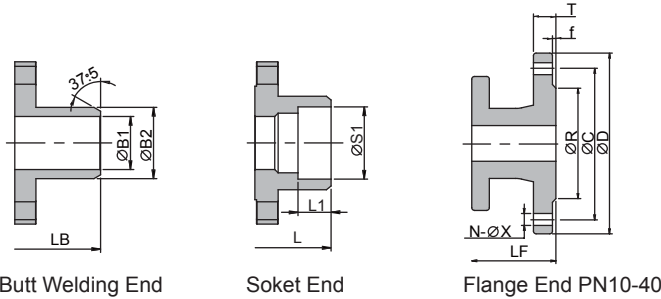
### FEATURES:

- Blow-out Proof Stem
- Anti-Static Device for Ball-Stem-Body
- Pressure Balance Hole in Ball Slot
- 2 Belleville Washer to Self-adjust Packing
- ISO 5211 Direct Mounting Pad for Easy Automation
- Locking Device Spring Handle, **New Design**

### STANDARD:

- Design: ASME B16.34, API 608
- Wall Thickness: EN12516-3
- Pipe Thread: ASME B1.20.1, BS21  
DIN 2999/259 ISO228/1  
JIS B0203 ISO 7/1
- Butt-Weld: ASME B16.25 (SCH 10, 20, 40)
- Socket Weld: ASME B16.11
- Flange End: ASME B16.5 CLASS 150/300  
DIN 2653 PN10-PN40  
JIS B2238 10K/20K
- Inspection & Testing: API 598, EN 12266

No.	PARTS NAME	MATERIAL		
		CF8M	CF8	WCB
1	Body	CF8M	CF8	WCB
2	Ball Seat	PTFE/RPTFE		
3	Anti-Sataic Device	SS304		
4	Cap	CF8M	CF8	WCB
5	Body Gasket	PTFE/RPTFE		
6	Spring Washer	SS304		
7	Nut	SS304		
8	Thrust Washer	PTFE		
9	O-Ring	VITON(FKM)		
10	V-Ring Packing	PTFE/RPTFE		
11	Packing Gland	SS304		
12	Belleville Waher	SS301		
13	Stem Nut	A194-8		
14	Stop Cap	SS304		
15	Washer	SS304		
16	Stop Nut	SS304		
17	Stem	SS316/SS304		
18	Handle	SS304		
19	Plastic Pin	Plastic		
20	Locking Device	SS301		
21	Handle Cover	Plastic		
22	Bolt	SS304		



Unit:mm

DN	ød	L	LB	LF	H	H1	E	ød1	ød2	øc1	øc2	□P	øB1	øB2	øS1	øR	øC	øD	øX	f	T
1/4"	10.5	75	72	--	75	42	130	42	36	6	6	9	10.6	18	14.2	--	--	--	--	--	--
3/8"	12.5	75	72	--	75	42	130	42	36	6	6	9	12.7	18	17.8	--	--	--	--	--	--
1/2"	15	75	75	130	75	42	130	42	36	6	6	9	15.8	22	21.8	45	65	95	14	2	16
3/4"	20	80	90	150	80	48.5	130	50	36	7	6	9	20.9	28	27.3	58	75	105	14	2	18
1"	25	90	100	160	90	58.5	165	50	42	7	6	11	26.7	34	34.0	68	85	115	14	2	18
1-1/4"	32	110	110	180	90	63	165	70	42	9	6	11	35.1	43	42.8	78	100	140	18	2	18
1-1/2"	38	120	125	200	100	71.3	190	70	50	9	7	14	40.9	50	48.9	88	110	150	18	3	18
2"	50	140	150	230	110	78	190	70	50	9	7	14	52.5	61	61.4	102	125	165	18	3	20
2-1/2"	65	185	190	290	130	100	250	102	70	11	9	17	62.7	76	74.0	122	145	185	18	3	22
3"	80	205	220	310	140	108	250	102	70	11	9	17	78	92	90.0	138	160	200	18	3	24
4"	100		270	350	175	140	280	102	--	11	--	22	102.4	115	115.4	162	190	235	22	3	24

### End Connections

many type of end connections are made to suit most customer requirements. The standard type are screwed, welded or flanged connections.

#### Screwed End

BSPT, NPT, BSPP DIN 2999/259

#### Pipe Welding End

From SCH 5-80

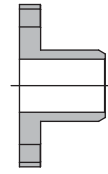
#### Flanged End

Class 150/300 ANSI B16.5  
DIN 3202-F1

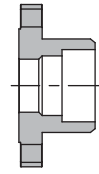
#### Other End

available ends are Clamp ends for Food industry,  
Compression Fitting ends for Semiconductor industry,  
Extended Pipe ends for Chemical industry,  
Other ends are available on request.

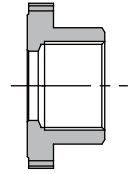
### Ends Description Sheet



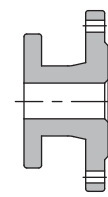
Butt Weld



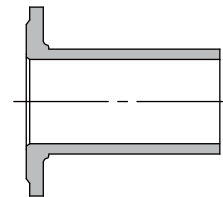
Socket Weld



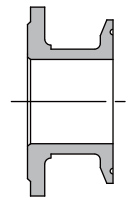
Screwed



Flange



Extended tube



Clamp

Strong enough handle indicating flow direction with optional locking device  
Exactitude handle locking for ball and cap Centrality, reduce pressure losing

Standard square stem and standard length for suitable actuator

High enough ISO direct mounting pad for easy assemble Automation

High flow capacity with avoiding pressure reducing at full opening

Large range of end connections for full bore

Interchangeable seat, stems and seals for several applications

2-pc seat design for pressure balance in open and shut valve

Several type of ball seat including metal seats for control applications

More easy in-line repair with swing out body

